

## PK86X-PF Flow-through high-purity PFA pressure sensor

### Application scenarios



Photovoltaic  
semiconductor



Cleaning equipment /  
wet process equipment



Corrosive  
liquid  
environment



Liquid dispensing  
system



### Product features

#### Reliable

Adopting a high-purity PFA integrated molding structure, safe and reliable

#### Design

The through flow liquid receiving chamber is a straight through type to avoid dead water zones

#### Acid and alkali resistant

The sensor is made of ceramics, and the sapphire version can be selected for HF/HCl

#### Connection

Various connection methods available for high-purity PFA materials

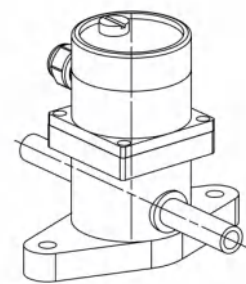
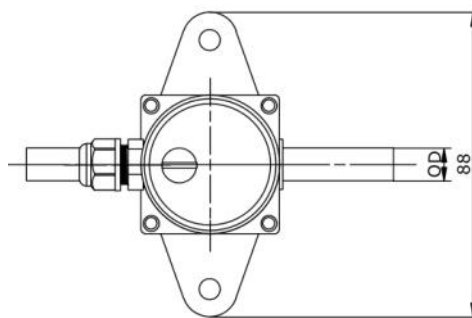
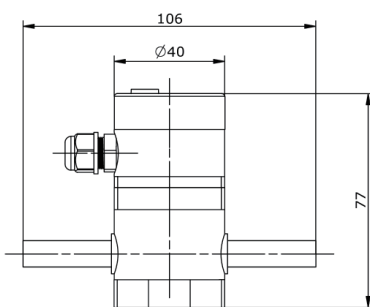
## Product Description

- This product features a high purity PFA one-piece construction, ensuring high reliability for various positive and negative pressure applications. The inline liquid contact chamber is designed with a straight-through flow path to effectively eliminate dead zones, ensuring stability.
- The pressure range covers -14.7 to 145 psi, with customizable ranges available to meet specific customer requirements.
- Each product undergoes 100% testing and temperature compensation during production, ensuring more stable and reliable data.
- The sensor is made of ceramic, making it compatible with acidic, alkaline media, and ultrapure water. For special media like HF/HCl, a dedicated sapphire sensor is available, providing better resistance to strong acids and effectively extending the product's lifecycle.

## Technical Specifications

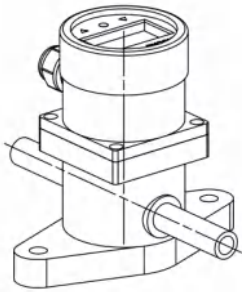
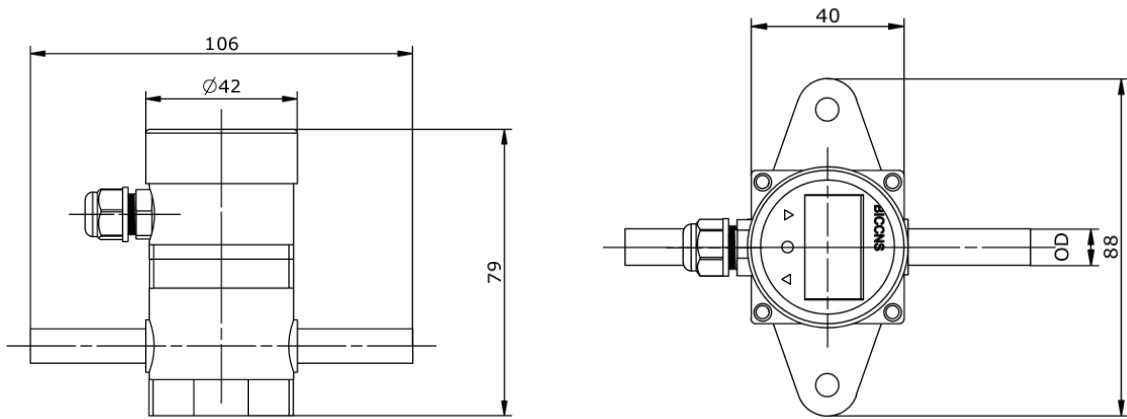
Applications	Gauge, Negative liquid pressure measurement
Measurement Range	-14.7.....0.....145psi
Accuracy Grade (@25°C)	±1%FS
Temperature Coefficient	±0.1%FS/°C
Sensor Material	Ceramic / Sapphire
Overload Pressure	Maximum 1.5 times Full Scale
Medium Temperature	0.....80°C
Ambient Temperature	-10.....65°C
Temp. Compensation	0.....40°C
Supply Voltage	DC24V (10...30 V DC)
Output Signal	4...20mA
Connection Material	PFA
Diaphragm Material	PFA
Stability Performance	Typical: ±1%FS/Year
Connection Method	Tube、 Flared、 Pillar etc
Protection Level	IP55

## Specifications and Dimensions (Unit: mm)



Flow-through type

This size is for reference only, please refer to the actual product for specific dimensions.



Digital Display Flow-through type

**Selection Rule**

<b>Output</b>	<b>Range</b>	<b>Pressure type</b>	<b>Process Connction</b>	<b>Connection Size</b>	<b>Application (Optional)</b>
420P 4-20mA+PNP*2+Digital Display	PU 50psi	G Gauge	T Tube	1 1/4"	SS HF/ HCl
420N 4-20mA+NPN*2+Digital Display	PT 75psi	M Negative	F Flared	2 3/8"	
1 4-20mA	PS 100psi		P Bead	3 1/2"	
	PO 145psi		Y Other	4 3/4"	
	YY Customized			9 Other	
10	20	30	40	50	60

**PK86X -PF flow-through PFA pressure sensor**

**Selection Rule :**

Requirement: 4-20mA Output、 0-100psi and 1/2"Tube

Model: PK86X-PF1PSGT3

Range Code Table			
Code	Range	Code	Range
G100K	(0~0.1) MPa	BG100K	(-0.1~0.1) MPa
G200K	(0~0.2) MPa	BG200K	(-0.1~0.2) MPa
G300K	(0~0.3) MPa	BG300K	(-0.1~0.3) MPa
G500K	(0~0.5) MPa	BG500K	(-0.1~0.5) MPa
G700K	(0~0.7) MPa	BG700K	(-0.1~0.7) MPa
G1M	(0~1) MPa	BG1M	(-0.1~1) MPa