

PK968 Bilateral Diaphragm Differential Pressure Transmitter

Certification



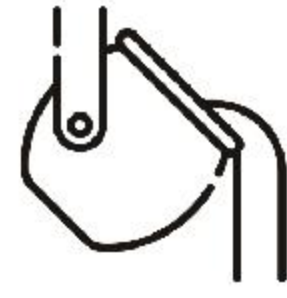
RoHS



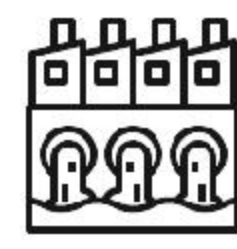
Application Scenarios



Petrochemical industry



Ferrous metallurgy



Water treatment system



Shipbuilding



Industrial measurement and control field

Product Features

Range	Accuracy	Output signal	Connection material	Diaphragm
0.....4MPa differential pressure	0.05%FS、 0.075%FS、 0.1%FS	4...20mA、0...5V 、0...10V、 Modbus、HART	Stainless steel 304, stainless steel 316	Stainless steel 316, Hastelloy alloy, Tantalum, PFA coating

Product Description

This product is a dual diaphragm differential pressure transmitter, with a maximum comprehensive accuracy of 0.05% FS and very small annual drift of 0.05% FS per year. The performance is very stable,

Excellent long-term stability. The product has obtained intrinsic safety and explosion-proof certification, and its high reliability performance is widely used in petrochemical, steel metallurgy, and water treatment systems, shipbuilding, industrial measurement and control.

The product uses high-performance conditioning chips and integrated circuits to convert sensor millivolt or milliampere signals into standard voltage, current, or digital signals, which can be directly communicate with upper computer, PLC, various intelligent instruments, and control monitoring platforms.

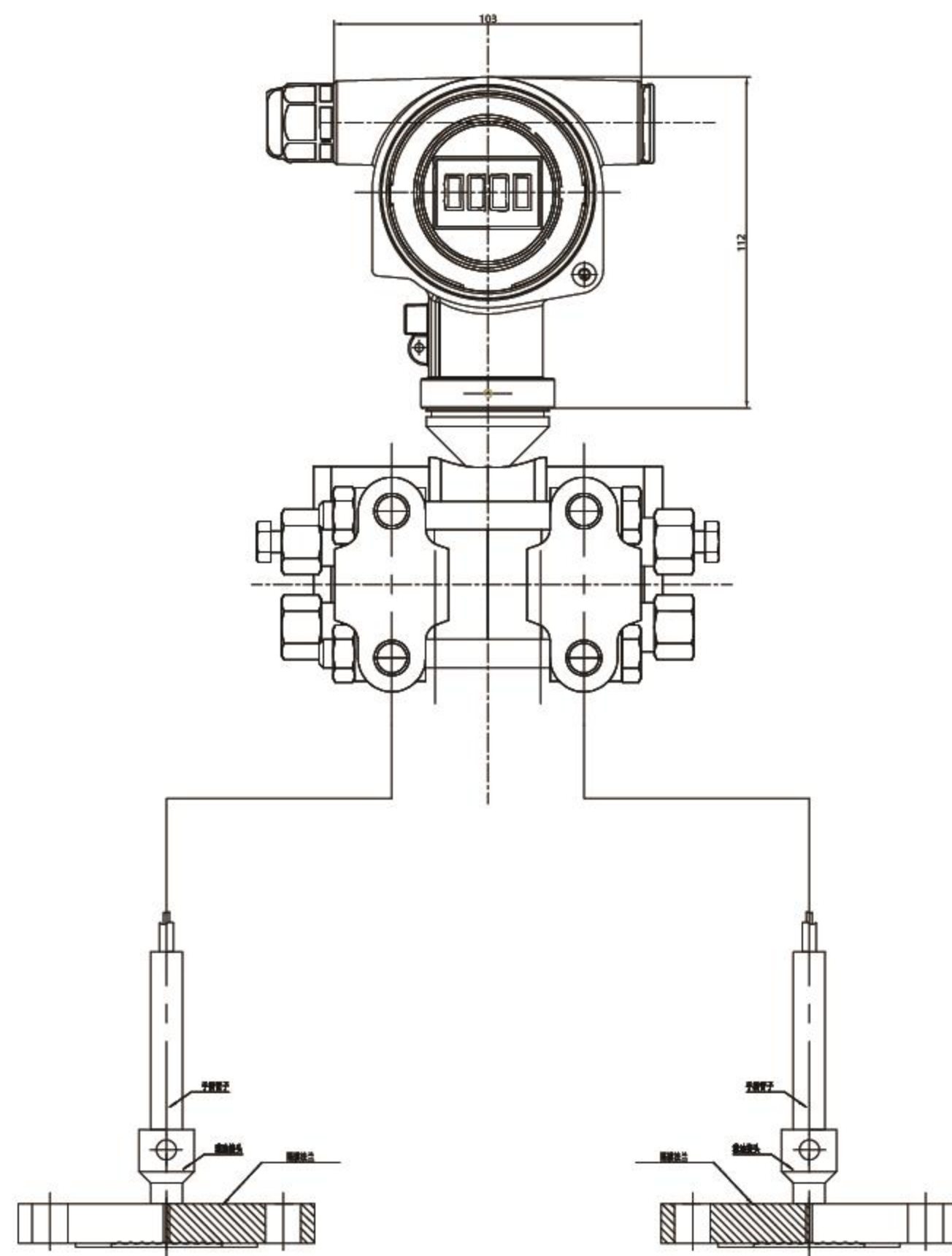
There are various types of connection materials and membrane materials, including stainless steel 304, stainless steel 316, anti-corrosion materials, Hastelloy alloy, titanium alloy, etc., which can be adjusted according to on-site working conditions

Choose the most suitable material.

Technical Parameter

Application scenarios	Differential Pressure Measurement
Measurement range	0....4MPa
Comprehensive accuracy	0.05%FS、0.075%FS、0.1%FS
Overpressure	Unilateral overpressure maximum 10MPa
Maximum static pressure	Maximum bilateral static pressure of 25MPa
Response time	<5ms (rising to 90% FS)
Medium temperature	-40... 400 ° C (depending on filling fluid)
Operating temperature	-40.....85°C
Supply voltage	DC24V (10...30 V DC)
Output signal	4...20mA 、 0...5V、 0...10V、 Modbus、 HART
Sealing level	IP65
Connection material	Stainless steel 304, Stainless steel 316
Diaphragm material	Stainless steel 316, Hastelloy alloy, Tantalum, PFA coating
Stability performance	0.05% FS/year
Process connection	Thread, flange
Electrical connection	M20、 NPT1/2、 G1/2、 M12

Specifications and Dimensions



Certification

- A Common
- B NEPSI Ex ia IIC T4
- C NEPSI Ex d IIC T6
- E NEPSI Ex d ia IIC T6

Shell+Communication interface

- M Aluminum shell+cable plug M20
- L Aluminum shell+cable plug G1/2
- N Aluminum shell+cable plug NPT1/2
- K Aluminum shell+cable plug M12
- Y Customized

Output

- 1 4-20mA
- 2 4-20mA + Display
- 3 0-10V
- 4 0-10V + Display
- 5 Modbus
- 6 Modbus + Display
- 7 4-20mA Hart
- 8 4-20mA Hart + Display

Diaphragm

- S 316L
- P PFA coating
- H Hastelloy alloy
- T Tantalum
- G Gold-plated
- Y Customized

Range

- DA 1kPa
- DB 3kPa
- DC 10kPa
- DD 40kPa
- DE 100kPa
- DF 400kPa
- DG 600kPa
- DH 1MPa
- DI 1.6MPa
- DJ 2.5MPa
- DK 4MPa
- YY Customized

Process structure

- D Bilateral diaphragm capillary type (Stainless steel protective cover)... meters
- H Bilateral diaphragm capillary type (PVC protective tube) ... meters

Process connection

- DA EN/DIN flange DN25 PN10-40 B1
- DB EN/DIN flange DN32 PN10-40 B1
- DC EN/DIN flange DN40 PN10-40 B1
- DD EN/DIN flange DN50 PN10-40 B1
- DE EN/DIN flange DN80 PN10-40 B1
- DS DN80 PN10-40 B1, 50/100/200 Diaphragm extension flange
- AA ASME flange 1" 300lbs RF
- AB ASME flange 1-1/2" 150lbs RF
- AC ASME flange 1-1/2" 300lbs RF
- AD ASME flange 2" 150lbs RF
- AE ASME flange 2" 300lbs RF
- AF ASME flange 3" 150lbs RF
- AG ASME flange 3" 300lbs RF
- AS NPS 3" Cl.150 RF (2/4/6/8) Diaphragm extension flange
- AH ASME flange 4" 150lbs RF
- AI ASME flange 4" 300lbs RF
- AP NPS 4" Cl.150 RF, (2/4/6/8) Diaphragm extension flange
- HA HG/T20592 flange DN50 PN10/40 RF
- HB HG/T20592 flange DN63 PN10/40 RF
- HC HG/T20592 flange DN80 PN10/40 RF
- HD HG/T20615 flange NPS 2" Cl.150 RF
- HE HG/T20615 flange NPS 3" Cl.150 RF
- HF HG/T20615 flange NPS 2" Cl.300 RF
- HG HG/T20615 flange NPS 3" Cl.300 RF
- TA Sanitary ISO2852 1"
- TB Sanitary ISO2852 1-1/2 "
- TC Sanitary ISO2852 2"
- TD Sanitary ISO2852 2-1/2 "
- 1A DIN 11851 DN25
- 1B DIN 11851 DN32
- 1C DIN 11851 DN40
- 1D DIN 11851 DN50
- GM M20x1.5 standard hole
- GN MNPT1/2, standard male thread
- NN FNPT1/2, standard female thread
- GQ MNPT3/4, standard male thread
- GO G1/4
- GP G1/2
- GR G1
- RA R1/2
- YY Special selection

Accuracy

- A 0.05%
- B 0.075%
- C 0.1%

10 20 30 40 50 60 70 80

PK968 Bilateral Diaphragm Differential Pressure Transmitter

Selection rules:

Requirements: Explosion proof certification, M20 communication interface, 4-20mA Hart+display, 1MPa, 0.05% FS, 316L, double-sided diaphragm capillary type (stainless steel protective sleeve), and G1/4

Select model: PK968-CM8DHSDGOA