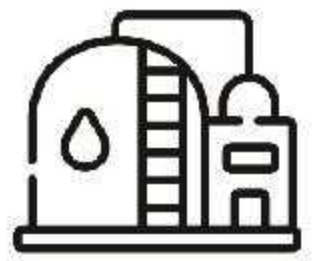


PG900 Sanitary pressure gauge

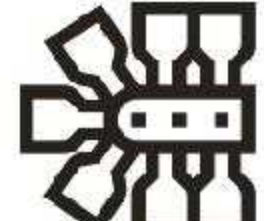
Application scenarios



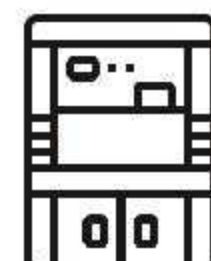
Pharmaceutical equipment



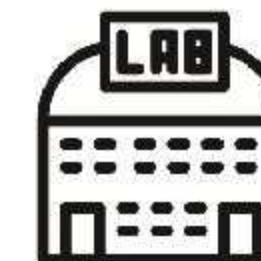
Beverage machinery



Food Machinery



Clean workshop



Lab



Product features

Seal	Range	Surface Treatment	Cleanliness	Durable
Adopting clamp type sanitary pressure connector, easy and fast assemble and disassemble, safe and reliable	-0.1~0 Up to 0~1.6MPa	Surface smoothness 0.6/0.4 μm . Carbon and hydrogen residues less than 220mg/square meter	Clamp type connector are easy to clean and not easily contaminated	Can withstand high temperatures for a long time, suitable for detecting CIP cleaning

Product description

- PG900 is a sanitary pressure gauge that can be used with various sanitary connectors. It has the advantages of easy assembling and disassembling, easy cleaning, less pollution, safety and reliability, etc
- The F6 clamp type sanitary pressure gauge product is widely used in scenarios such as pharmaceutical equipment, beverage machinery, food machinery, laboratories, and clean rooms. Used for detecting pressure in pipelines, tanks, and equipment. It can withstand high temperatures for a long time and has no residue on the surface. It is suitable for detecting CIP cleaning.
- The surface smoothness of the product contact medium shall not exceed 0.6 μm . 0.4 μm . The surface hydrocarbon residue shall not exceed 2200mg/square meter.
- The product highly supports various customer needs and supports high customization.

Technical Parameter



Dial Diameter

63mm、98mm



Range

-0.1~0 to 0~1.6MPa

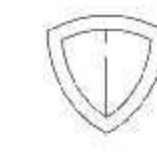


Accuracy class

 $\pm 2.5\%FS \setminus \pm 1.6\%FS$ $\pm 1\%FS$ (98mm Optional)

Design Standard

GB/T1226-2001



Protection level

IP65 EN 60529



Medium temperature

Dry type: $-20\sim 150^{\circ}C$ Oil filled: $-20\sim 120^{\circ}C$

Operating temperature

Dry type: $-40\sim 80^{\circ}C$ Oil filled: $-20\sim 80^{\circ}C$ 

Oil filled

Gauge oil filling:
Glycerol, Silicone oil
Diaphragm oil filling:
Food grade Glycerol

Pressure withstand

Max withstand pressure:

1.3 times full scale



Surface Treatment

No microorganisms, no proteins

Surface smoothness not exceeding

 $0.6\ \mu m. 0.4\ \mu m$ 

Material

Shell: 304SS

Contact: 316SS



Process connection

Multiple threads available: DIN11851 (male thread type) series

DIN11851 (female thread type) series

SMS681 (male thread type) series

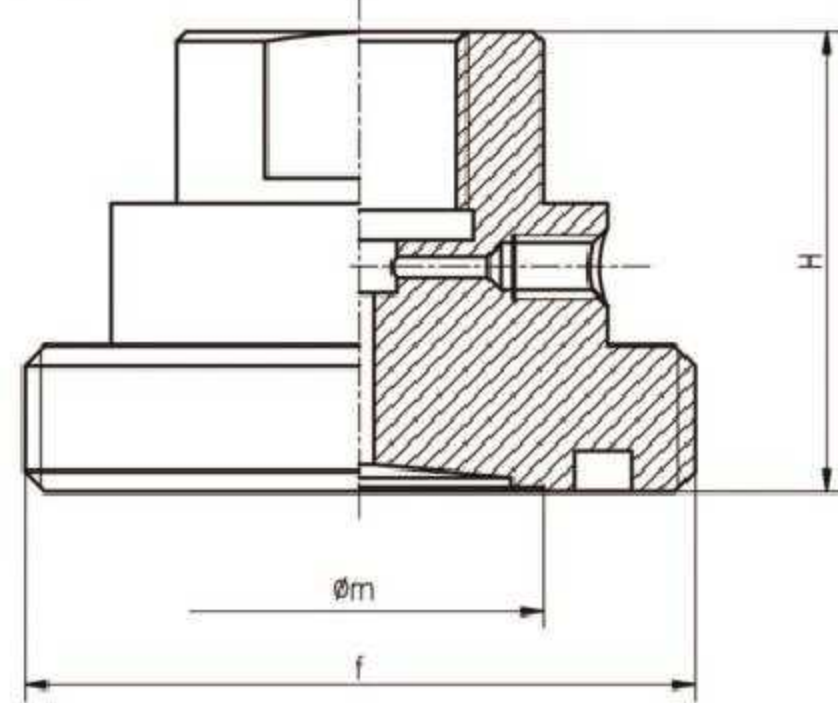
SMS681 (male thread type) series



Specifications and dimensions

01

外螺纹式



DIN 11851 (Male thread)

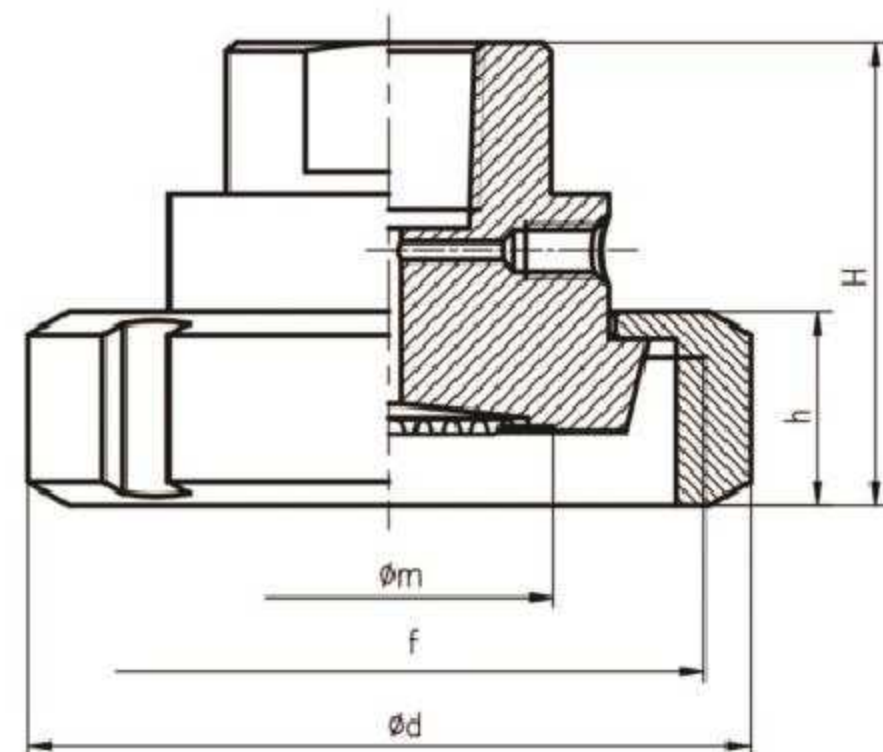
DN	H	m	f
25	46	35	Rd52X1/6
32	46	35	Rd58X1/6
40	46	35	Rd65X1/6
50	46	42	Rd78X1/6
65	46	58	Rd95X1/6

SMS681 (Male thread)

DN	H	m	f
1.5	46	35	Rd60X1/6
2	46	42	Rd70X1/6
2.5	46	42	Rd85X1/6

02

内螺纹式



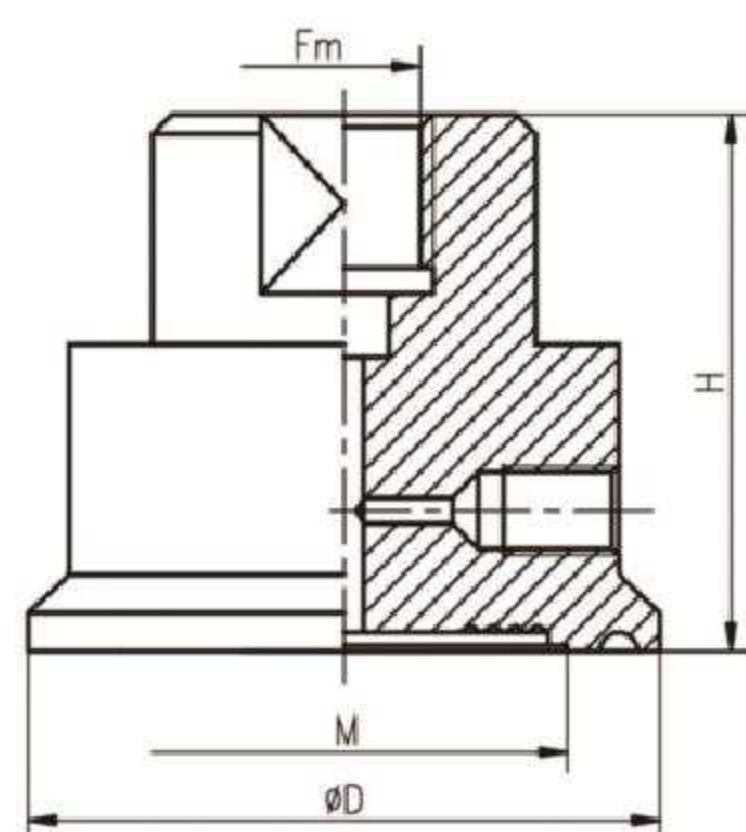
DIN 11851 (Female thread)

DN	H	h	d	m	f
25	44	21	61	35	Rd52X1/6
32	49	21	68	35	Rd58X1/6
40	49	21	76	42	Rd65X1/6
50	50	22	90	50	Rd78X1/6
65	52	24	110	56	Rd95X1/6

SMS681 (Female thread)

DN	H	h	d	m	f
1.5	51	23	72	35	Rd60X1/6
2	51	23	82	50	Rd70X1/6
2.5	51	25	98	58	Rd85X1/6

03



DN	D	H	h	C	M
3/4	25	42.5	21	25.4	19
1.5	50.5	42.5	21	38.1	35.5
2	64	42.5	21	50.8	35.5
2.5	77.5	42.5	21	63.5	56

<p>Dial diameter</p> <p>63 φ63mm</p> <p>98 φ98mm</p>	<p>Mounting method</p> <p>A Radial direct mounting</p> <p>C Axial direct mounting</p> <p>Y Customers provided requirements</p>	<p>Pressure Range</p> <p>XX Customers provided requirements</p>	<p>Thread Spec</p> <p>DM DIN11851 Male</p> <p>DF DIN11851 Female</p> <p>SM SMS681 Male</p> <p>SF SMS681 Female</p> <p>FF F6</p> <p>TA Clamp flat film type(50.5)</p> <p>YY Customized</p>	<p>Special Options</p> <p>BP Special gauge panel</p> <p>YY Customized</p>
10	20	30	40	50

PG900 Sanitary pressure gauge

Selection rules:

Requirement: dial diameter 63mm, radial, (0-1) MPa, clamp 50.5

Model selection: PG900-63AXXTA (0-1) MPa, clamp 50.5